

TECHNICAL MANUAL

**ORGANIZATIONAL, DIRECT SUPPORT, AND GENERAL SUPPORT
MAINTENANCE REPAIR PARTS AND SPECIAL TOOLS LIST
(INCLUDING DEPOT MAINTENANCE REPAIR PARTS AND SPECIAL TOOLS)
FOR
RECTIFIER POWER SUPPLY PP-4606D/G
(NSN 6130-00-504-0327)**

**HEADQUARTERS, DEPARTMENT OF THE ARMY
20 MAY 1985**

TECHNICAL MANUAL

No. 11-6130-243-24P-4

HEADQUARTERS
DEPARTMENT OF THE ARMY
WASHINGTON, DC, 20 May 1985

**ORGANIZATIONAL, DIRECT SUPPORT AND GENERAL SUPPORT
MAINTENANCE REPAIR PARTS AND SPECIAL TOOLS LIST
(INCLUDING DEPOT MAINTENANCE REPAIR PARTS AND SPECIAL TOOLS)
FOR
RECTIFIER POWER SUPPLY PP-4606D/G
(NSN 6130-00-504-0327)
Current as of 21 March 1985**

REPORTING ERRORS AND RECOMMENDING IMPROVEMENTS

You can help improve this manual. If you find any mistakes or if you know of a way to improve the procedures, please let us know. Mail your letter, DA Form 2028 (Recommended Changes to Publications and Blank Forms), or DA Form 2028-2 located in back of this manual direct to: Commander, US Army Communications-Electronics Command and Fort Monmouth, ATTN: AMSEL-ME-MP, Fort Monmouth, NJ 07703-5007.

In either case, a reply will be furnished direct to you.

Table of Contents

		Page	Illus. Figure
SECTION	I. Introduction	1	
	II. Repair Parts List,	1-1	
GROUP	00 Rectifier Power Supply PP-4606D/G	1-1	1
	01 Main Assembly	2-1	2
	0101 Front Panel Assembly Act	3-1	3
	010101 Circuit Board Assembly	4-1	4
	0102 Power Module Assembly	5-1	5
SECTION	III. Special Tools List (Not applicable)		
	IV. National Stock Number and Part Number Index	I-1	

SECTION I

INTRODUCTION

1. Scope

This manual lists and authorizes spares and repair parts; special tools; special test, measurement, and diagnostic equipment (TMDE); and other special support equipment required for performance of organizational, direct support, and general support maintenance of the PP-4604D/G. It authorizes the requisitioning, issue, and disposition of spares, repair parts and special tools as indicated by the source, maintenance and recoverability (SMR) codes.

2. General

This Repair Parts and Special Tools List is divided into the following sections:

a. Section II. Repair Parts List. A list of spares and repair parts authorized by this RPSTL for use in the performance of maintenance. The list also includes parts which must be removed for replacement of the authorized parts. Parts lists are composed of functional groups in ascending numeric sequence, with the parts in each group listed in ascending item number sequence. Figure numbers are listed directly beneath the group header.

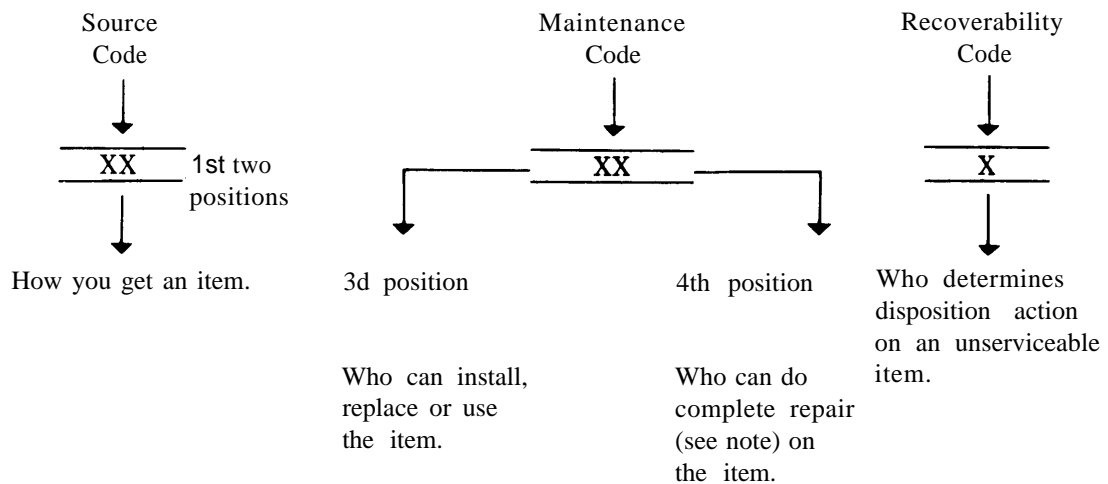
b. Section III. Special Tools List. Not applicable.

c. Section IV. National Stock Number and Part Number Index. A list, in National item identification number (NIIN) sequence, of all National stock numbered items appearing in the listing, followed by a list in alphabetic sequence of all part numbers appearing in the listings. National stock numbers and part numbers are cross-referenced to each illustration figure and item number appearance.

3. Explanation of Columns (Section II and III)

a. Item No. (Column (1)). Indicates the number used to identify items called out in the illustration.

b. SMR Code (Column (2)). The source, maintenance, and recoverability (SMR) code is a five-position code containing supply/requisitioning information, maintenance category authorization criteria, and disposition instruction, as shown in the following breakout:



NOTE

Complete repair: Maintenance capacity, capability, and authority to perform all corrective maintenance tasks of the "Repair" function in a use/user environment in order to restore serviceability to a failed item.

(1) *Source code.* The source code tells you how to get an item needed for maintenance, repair, or overhaul of an end item/equipment. Explanations of source codes follows:

Code

Explanation

PA
PB
PC
PD
PE
PF
PG

Stocked items; use the applicable NSN to request/requisition items with these source codes. They are authorized to the category indicated by the code entered in the third position of the SMR code.

NOTE

Items coded PC are subject to deterioration.

KD
KF
KB

Items with these codes are not to be requested/requisitioned individually. They are part of a kit which is authorized to the maintenance category indicated in the third position of the SMR code. The complete kit must be requisitioned and applied.

MO—Made at
org/AVUM
category
MF—Made at
DS/AVUM
category
MH—Made at
GS category
ML—Made at
Specialized Repair
Activity (SRA)
MD—Made
Depot

Items with these codes are not to be requested/requisitioned individually. They must be made from bulk material which is identified by the part number in the description and usable on code (UOC) column and listed in the Bulk Material group of the repair parts list. If the item is authorized to you by the third position code of the SMR code, but the source code indicates it is made at a higher category, order the item from the higher category of maintenance.

AO—Assembled by
org/AVUM
category
AF—Assembled by
DS/AVIM
category
AH—Assembled by
GS category
AL—Assembled by
SRA
AD—Assembled by
Depot

Items with these codes are not to be requested/requisitioned individually. The parts that make up the assembled item must be requisitioned or fabricated and assembled at the category of maintenance indicated by the source code. If the disposition code of the SMR code authorizes you to replace the item, but the source code indicates the item is assembled at a higher category, order the item from the higher category of maintenance.

Code

Explanation

XA—Do not requisition an “XA” coded item. Order its next higher assembly.
 XB—If an “XB” item is not available from salvage, order it using the FSCM and part number given.
 XC—Installation drawing, diagram, instruction sheet, field service drawing, that is identified by manufacturers part number.
 XD—Item is not stocked. Order an “XD” coded item through normal supply channels using the FSCM and part number given, if no NSN is available.

NOTE

Cannibalization or controlled exchange, when authorized, may be used as a source of supply for items with the above source codes, except for those source coded “XA” or those aircraft support items restricted by requirements of AR 750-1.

(2) *Maintenance code.* Maintenance codes tell you the category of maintenance authorized to USE and REPAIR support items. The maintenance codes are entered in the third and fourth positions of the SMR code as follows:

(a) The maintenance code entered in the third position tells you the lowest maintenance category authorized

to remove, replace, and use an item. The maintenance code entered in the third position will indicate authorization to one of the following categories of maintenance.

<i>Code</i>	<i>Application/Explanation</i>
C	Crew or operator maintenance done within organizational or aviation maintenance.
O	Organizational or aviation unit category can remove, replace, and use the item.
F	Direct support or aviation intermediate category can remove, replace, and use the item.
H	General support category can remove, replace, and use the item.
L	Specialized repair activity can remove, replace, and use the item.
D	Depot category can remove, replace, and use the item.

(b) The maintenance code entered in the fourth position tells whether or not the item is to be repaired and identifies the lowest maintenance category with the capability to do complete repair (i.e., perform all authorized repair functions). This position will contain one of the following maintenance codes.

NOTE

Some limited repair may be done on the item at a lower category of maintenance, if authorized by the Maintenance Allocation Chart (MAC) and SMR codes.

<i>Code</i>	<i>Application/Explanation</i>
O	Organizational or aviation unit is the lowest category that can do complete repair of the item.
F	Direct support or aviation intermediate is the lowest category that can do complete repair of the item.
H	General support is the lowest category that can do complete repair of the item.
L	Specialized repair activity (designate the specialized repair activity) is the lowest category that can do complete repair of the item.
D	Depot is the lowest category that can do complete repair of the item.
Z	Nonreparable. No repair is authorized.
B	No repair is authorized. (No parts or special tools are authorized for the maintenance of a "B" coded item). However, the item may be reconditioned by adjusting, lubricating, etc., at the user category.

(3) *Recoverability code.* Recoverability codes are assigned to items to indicate the disposition action on unserviceable items. The recoverability code is entered in the fifth position of the SMR Code as follows:

<i>Recoverability Code</i>	<i>Application/Explanation</i>
Z	Nonreparable Item. When unserviceable, condemn and dispose of the item at the category of maintenance shown in the third position of SMR Code.
O	Reparable item. When uneconomically repairable, condemn and dispose of the item at organizational or aviation unit category.
F	Reparable item. When uneconomically repairable, condemn and dispose of the item at direct support or aviation intermediate category.
H	Reparable item. When uneconomically repairable, condemn and dispose of the item at general support category.
D	Reparable item. When beyond lower category repair capability, return to depot. Condemnation and disposal of item not authorized below depot category.
L	Reparable item. Condemnation and disposal not authorized below specialized repair activity (SRA).
A	Item requires special handling or condemnation procedures because of specific reasons (e.g., precious metal content, high dollar value, critical material, or hazardous material), Refer to appropriate manuals/directives for specific instructions.

c. *FSCM (Column (3)).* The Federal Supply Code for Manufacturer (FSCM) is a 5-digit numeric code which is used to identify the manufacturer, distributor, or Government agency, etc., that supplies the item.

d. *Part Number (Column (4)).* Indicates the primary number used by the manufacturer (individual, company, firm, corporation, or Government activity), which controls the design and characteristics of the item by means of its engineering drawings, specifications, standards, and inspection requirements to identify an item or range of items.

NOTE

When you use a NSN to requisition an item, the item you receive may have a different part number from the part ordered.

e. *Description and Usable on Code (UOC) (Column(5)).* This column includes the following information.

(1) The Federal item name and, when required, a minimum description to identify the item.

(2) The statement "END OF FIGURE" appears just below the last item description in Column (5) for a given figure in both section II and section III.

f. *Qty (Column (6)).* Indicates the quantity of the item used in the breakout shown on the illustration figure, which is prepared for a functional group, subfunctional group, or an assembly. A "V" appearing in this column in lieu of a quantity indicates that the quantity is variable and the quantity may vary from application to application.

4. Explanation of Columns (Section IV)

a. National Stock Number (NSN) Index.

(1) *Stock number column.* This column lists the NSN by National item identification number (NIIN) sequence. The NIIN consists of the last nine digits of the NSN. When using this column to locate an item, ignore the first four digits of the NSN. When requisitioning items use the complete NSN (13 digits).

(2) *Fig. column.* This column lists the number of the figure where the item is identified/located. The illustrations are in numerical sequence in sections II and III.

(3) *Item column.* The item number identifies the item associated with the figure listed in the adjacent Fig. column. This item is also identified by the NSN listed on the same line.

b. Part Number Index. Part numbers in this index are listed by part number in ascending alphameric sequence.

(1) *FSCM column.* This column lists the Federal supply code for manufacturer (FSCM).

(2) *Part number column.* This column indicates the part number assigned to the item.

(3) *Stock number column.* This column lists the National stock number for the associated part number and manufacturer identified in the part number and FSCM columns to the left.

(4) *Fig. column.* This column lists the number of the figure where the item is identified/located in sections II and III.

(5) *Item column.* The item number is that number assigned to the item as it appears in the figure referenced in the adjacent figure number column.

5. Special Information

a. Associated Publications. The publications listed below pertain to the PP-4604D/G and its components:

TM 11-6130-243-12, Power Supply PP-4604/G

TM 11-6130-243-12-1, Power Supply PP-4604A/G

TM 11-6130-243-14-2, Power Supply PP-4604B/G

TM 11-6130-243-14-3, Power Supply PP-4606C/G

TM 11-6130-243-14-4, Power Supply PP-4606D/G

TM 11-6130-243-24P, Power Supply PP-4606A/G

TM 11-6130-243-24P-1, Power Supply PP-4606A/G

TM 11-6130-243-24P-2, Power Supply PP-4606B/G

TM 11-6130-243-24P-3, Power Supply PP-4606C/G

b. National Stock Numbers. National stock numbers (NSN's) that are missing from P source coded items have been applied for and will be added to this TM by future change/revision when they are entered in the Army Master Data File (AMDF). Until the NSN's are established and published, submit exception requisitions to: Commander, US Army Communications-Electronics Command and Fort Monmouth, ATTN: AMSEL-MM, Fort Monmouth, NJ 07703-5006 for the part required to support your equipment.

6. How to Locate Repair Ports

a. When National stock number or part number is not known.

(1) *First.* Using the table of contents, determine the assembly group or subassembly group to which the item belongs. This is necessary since figures are prepared for assembly groups and subassembly groups, and listings are divided into the same groups.

(2) *Second.* Find the figure covering the assembly group or subassembly group to which the item belongs.

(3) *Third.* Identify the item on the figure and note the item number.

(4) *Fourth.* Refer to the Repair Parts List for the figure to find the part number for the item number noted on the figure.

(5) *Fifth.* Refer to the Part Number Index to find the NSN, if assigned.

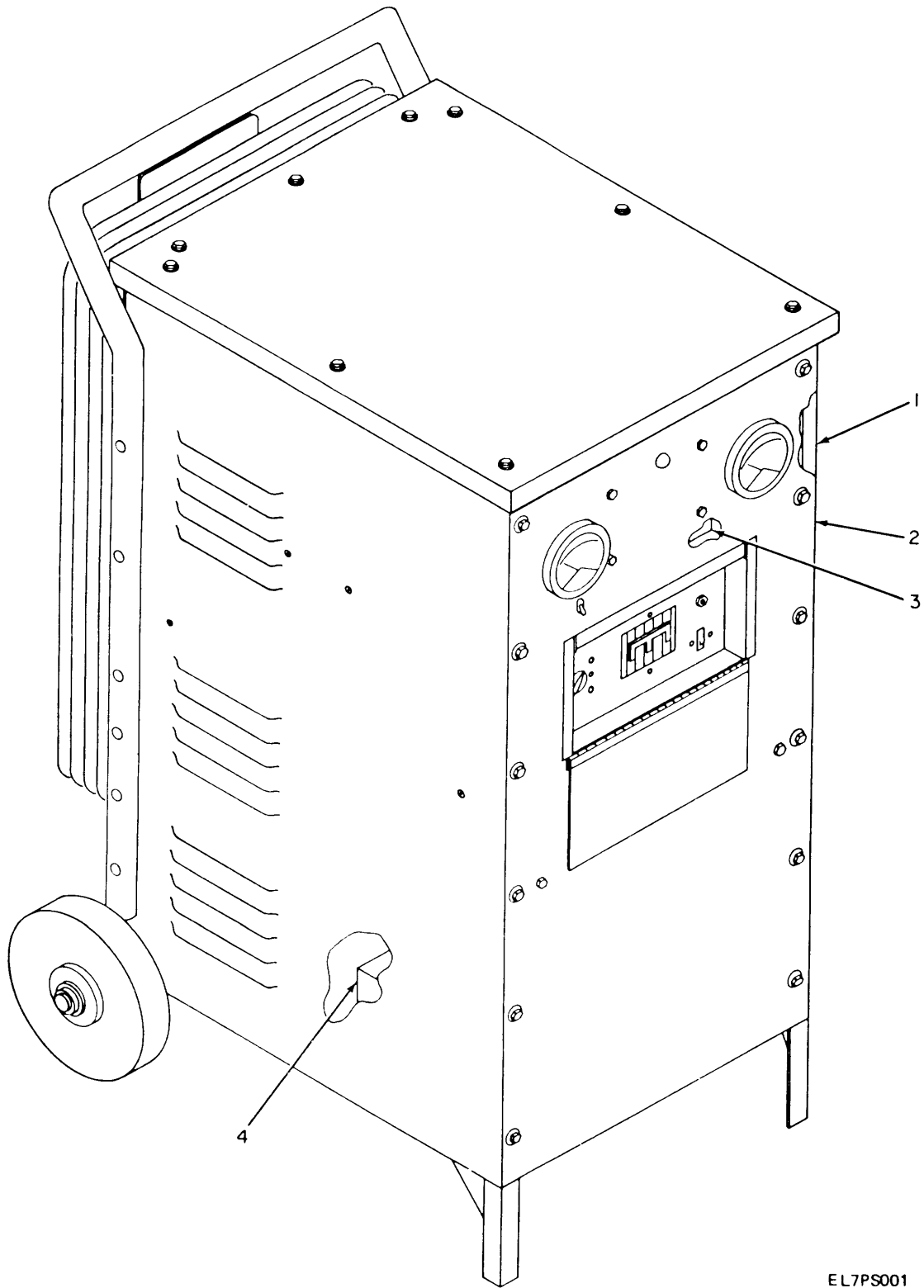
b. When National stock number or part number is known.

(1) *First.* Using the index of National stock numbers and part numbers, find the pertinent National stock number or part number. The NSN index is in National item identification number (NIIN) sequence (para 4a(1)). The part numbers in the part number index are listed in ascending alphameric sequence (para 4b). Both indexes cross-reference you to the illustration figure and item number of the item you are looking for.

(2) *Second.* After finding the figure and item number, verify that the item is the one you're looking for, then locate the item number in the repair parts list for the figure.

7. Abbreviations

Not applicable.



EL7PS001

Figure 1. Rectifier Power Supply PP-4606D/G

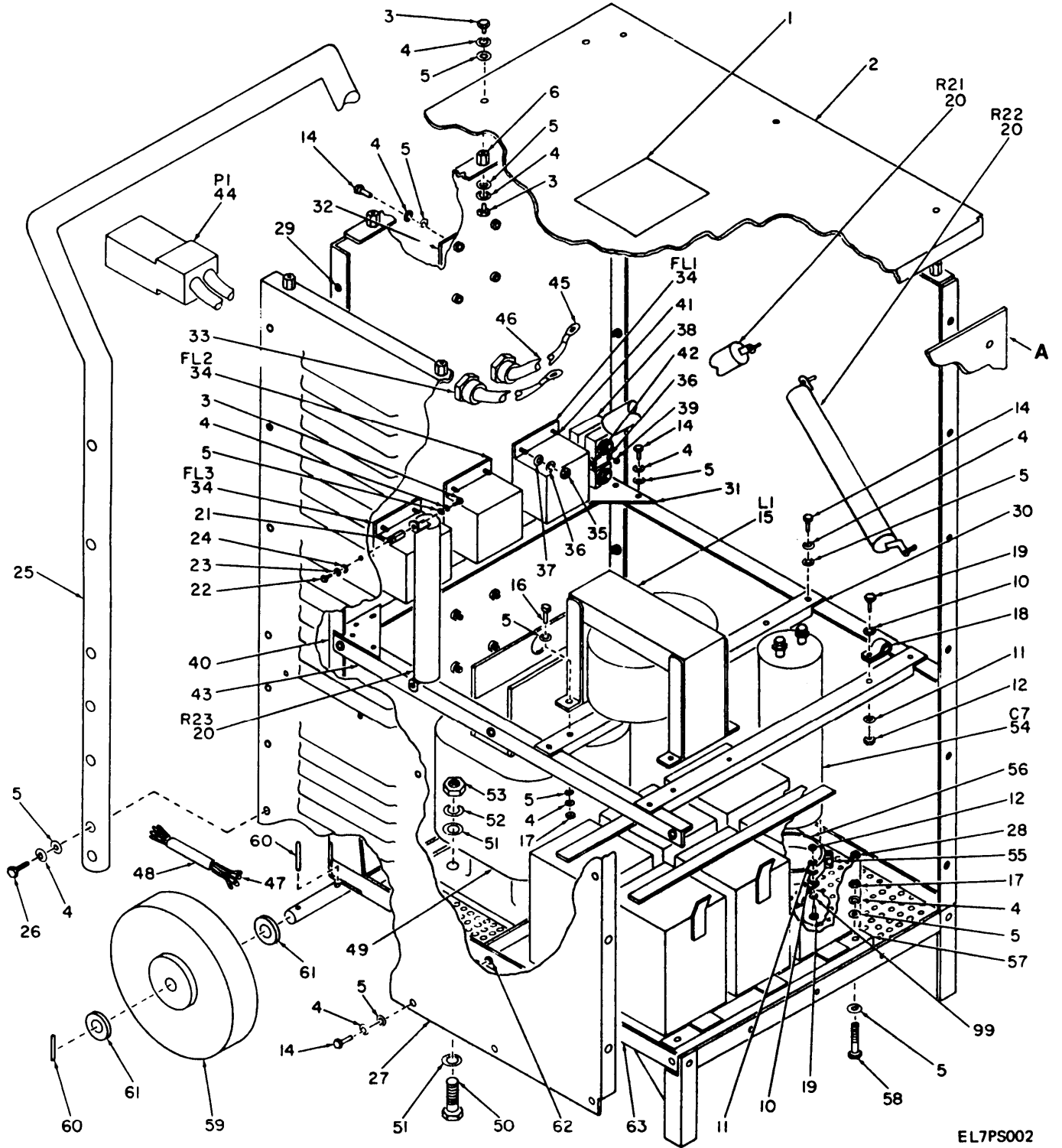
(1) ITEM NO	(2) SMR CODE	(3) FSCM	(4) PART NUMBER	(5) DESCRIPTION AND USABLE ON CODE (UOC)	(6) QTY
-------------------	--------------------	-------------	-----------------------	---	------------

GROUP 00 POWER SUPPLY
PP4606D/G

FIG 1

1	XBHHH	55364	200853	MAIN ASSEMBLY	1
2	XBOFF	55364	200846	PANLE, FRONT ASSY	1
3	PAFHH	55364	200906	CIRCUIT CARD ASSEMB	1
4	XBOFF	55364	200713	RECTIFIER ASSEY	1

END OF FIGURE



EL7PS002

Figure 2. Main Assembly (Sheet 1 of 2)

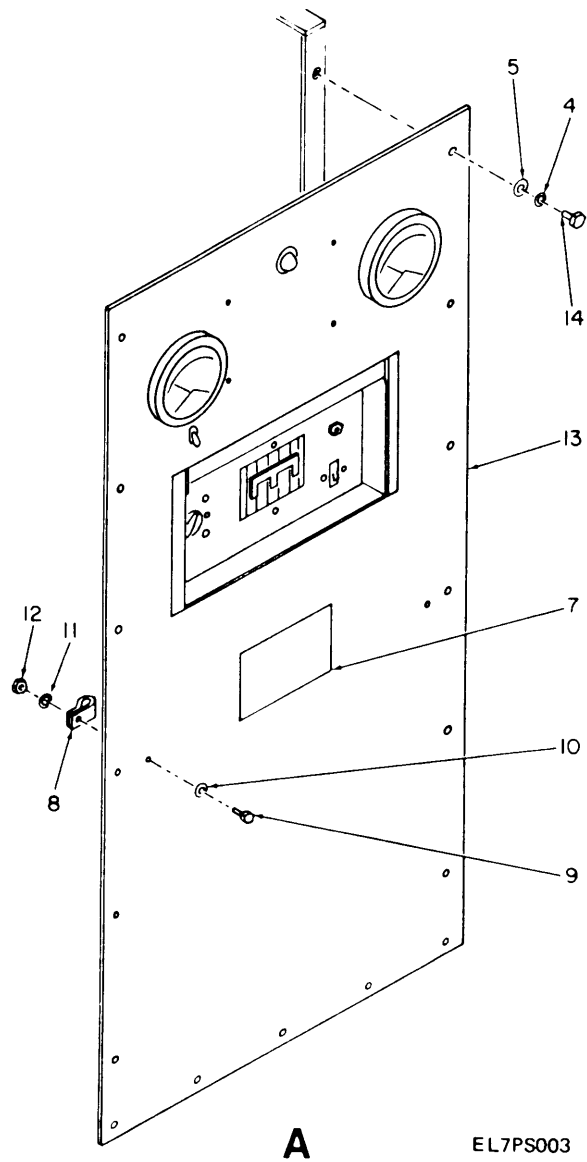


Figure 2. Main Assembly (Sheet 2 of 2)

(1) ITEM NO	(2) SMR CODE	(3) FSCM	(4) PART NUMBER	(5) DESCRIPTION AND USABLE ON CODE (UOC)	(6) QTY
GROUP 01 MAIN ASSEMBLY					
FIG 2					
1	PAHZZ	55364	200908	WARNING LABEL	1
2	XBOZZ	55364	200848	COVER TOP	1
3	PAHZZ	96906	MS35308-302	SCREW,CAP,HEXAGON H	1
4	PAFZZ	96906	MS35338-139	WASHER,LOCK	95
5	PAFZZ	96906	MS15795-810	WASHER,FLAT	93
6	XBFZZ	06540	8751SS2528-7	SPACER,THD	9
7	XBFZZ	55364	201040	PLATE,IDENT	1
8	XBFZZ	83330	8948	CLAMP,CABLE	1
9	PAFZZ	96906	MS51957-46	SCREW,MACHINE	1
10	PAHZZ	96906	MS15795-807	WASHER,FLAT	1
11	PAFZZ	96906	MS35338-137	WASHER,LOCK	1
12	PAHZZ	96906	MS35649-284	NUT,PLAIN,HEXAGON	1
13	XBOFF	55364	200846	PANEL FRONT	1
14	PAHZZ	96906	MS35308-305	SCREW,CAP,HEXAGON H	1
15	XBFZZ	08779	201100	CHOKER	1
16	PAFZZ	96906	MS35308-306	SCREW,CAP,HEXAGON H	1
17	PAHZZ	96906	MS35650-3254	NUT,PLAIN,HEXAGON	4
18	XBFZZ	83330	8952	CLAMP,LOOP	1
19	PAFZZ	96906	MS51957-47	SCREW,MACHINE	1
20	PAFZZ	44655	2516	RESISTOR,FIXED,WIRE	3
21	XBFZZ	55364	201329	SPACER,THD	6
22	PAFZZ	96906	MS51957-28	SCREW,MACHINE	2
23	PAFZZ	96906	MS35338-136	WASHER,LOCK	2
24	PAHZZ	80063	SM-B-416109-1	WASHER,FLAT	1
25	XBFZZ	35364	200849	HANDLE	1
26	PAHZZ	96906	MS35308-312	SCREW,MACHINE	1
27	XBFZZ	55364	200944	COVER LEFT SIDE	1
28	XBFZZ	55364	200846	COVER,RIGHT,SIDE	1
29	XBFZZ	46384	CL50428-1	FASTNER	22
30	XBFZZ	55364	200946	RAIL	2
31	XBFZZ	55364	200945	GUSSET	2
32	XBFZZ	55364	200947	BRACKET	2
33	XBFZZ	81992	003-22-003	LOCKNUT	1
34	PAFZZ	5364	200402	FILTER,BAND SUPPRES	3
35	PAFZZ	96906	MS35650-304	NUT,PLAIN,HEXAGON	4
36	PAFZZ	96906	MS35338-138	WASHER,LOCK	4
37	PAFZZ	96906	MS15795-808	WASHER,FLAT	2
38	XBFZZ	59108	0-50MV300A	SHUNT	1
39	PAFZZ	81349	NAS671C10	NUT,PLAIN,HEX	2
40	PAHZZ	55364	200943	COVER REAR	1
41	PAHZZ	12436	540459-10-32-128	STUD,SELF-LOCKING	12
42	PAHZZ	46384	FHS032-12	STUD,SELF-LOCKING	2
43	XBFZZ	55364	200942	SUPPORT,CENTER	1
44	PAFZZ	96906	MS25488-26	CONNECTOR,RECEPTACL	1
45	XBFZZ	59730	RK717	LUG,TERMINAL	2
46	XBFZZ	81774	01763	LEAD,ELEC	65
47	PAFZZ	96906	MS25036-112	TERMINAL,LUG	12
48	XBFZZ	81774	85014-85	LEAD,ELEC	105

(1) ITEM NO	(2) SMR CODE	(3) FSCM	(4) PART NUMBER	(5) DESCRIPTION AND USABLE ON CODE (UOC)	(6) QTY
49	XBFZZ	55364	200692	TRANSFORMER, PWR	1
50	PAFZZ	96906	MS35308-413	SCREW, CAP, HEXAGON H	4
51	PAFZZ	96906	MS15795-818	WASHER, FLAT	8
52	PAFZZ	96906	MS35338-143	WASHER, LOCK	4
53	PAFZZ	96906	MS35650-3394	NUT, PLAIN, HEXAGON	4
54	PAFZZ	56699	GN144U050KMA1	CAPACITOR	1
55	PAFZZ	96906	MS51957-49	SCREW, MACHINE	1
56	PAHZZ	56699	942A734AAP013	CLAMP, CAP MTG	1
57	XBOFF	55364	200713	RECTIFIER ASSY	1
58	PAFZZ	96906	MS35308-313	SCREW, MACHINE	4
59	PAHZZ	86489	3834008162UV	WHEEL	1
60	PAHZZ	81349	NAS561	PIN STRAIGHT HEADLE	1
61	PAHZZ	96906	MS15795-822	WASHER, FLAT	1
62	XBFZZ	46384	CL50428-1	FASTNER	6
63	XBFZZ	55364	200845	FRAME	1

END OF FIGURE

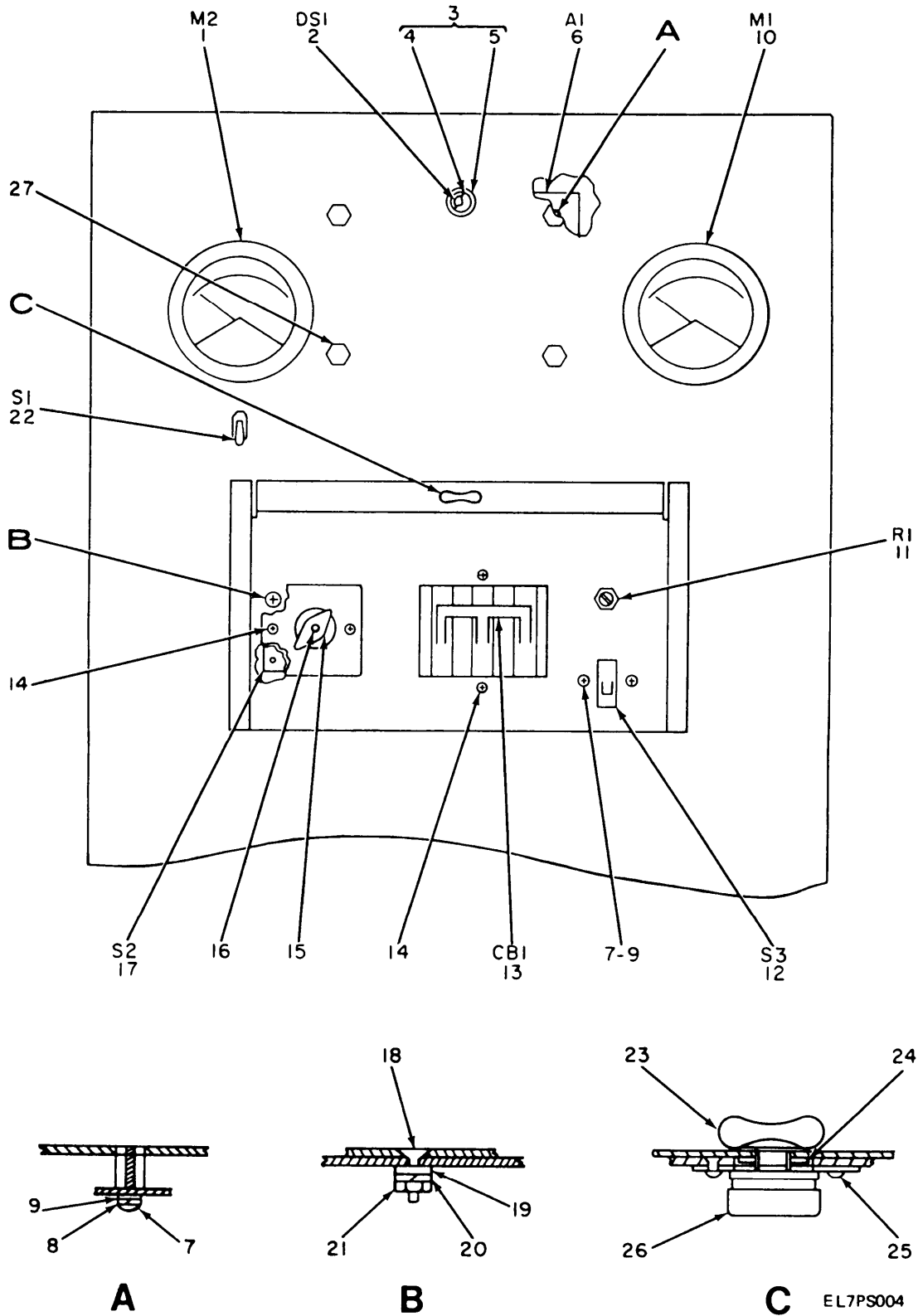
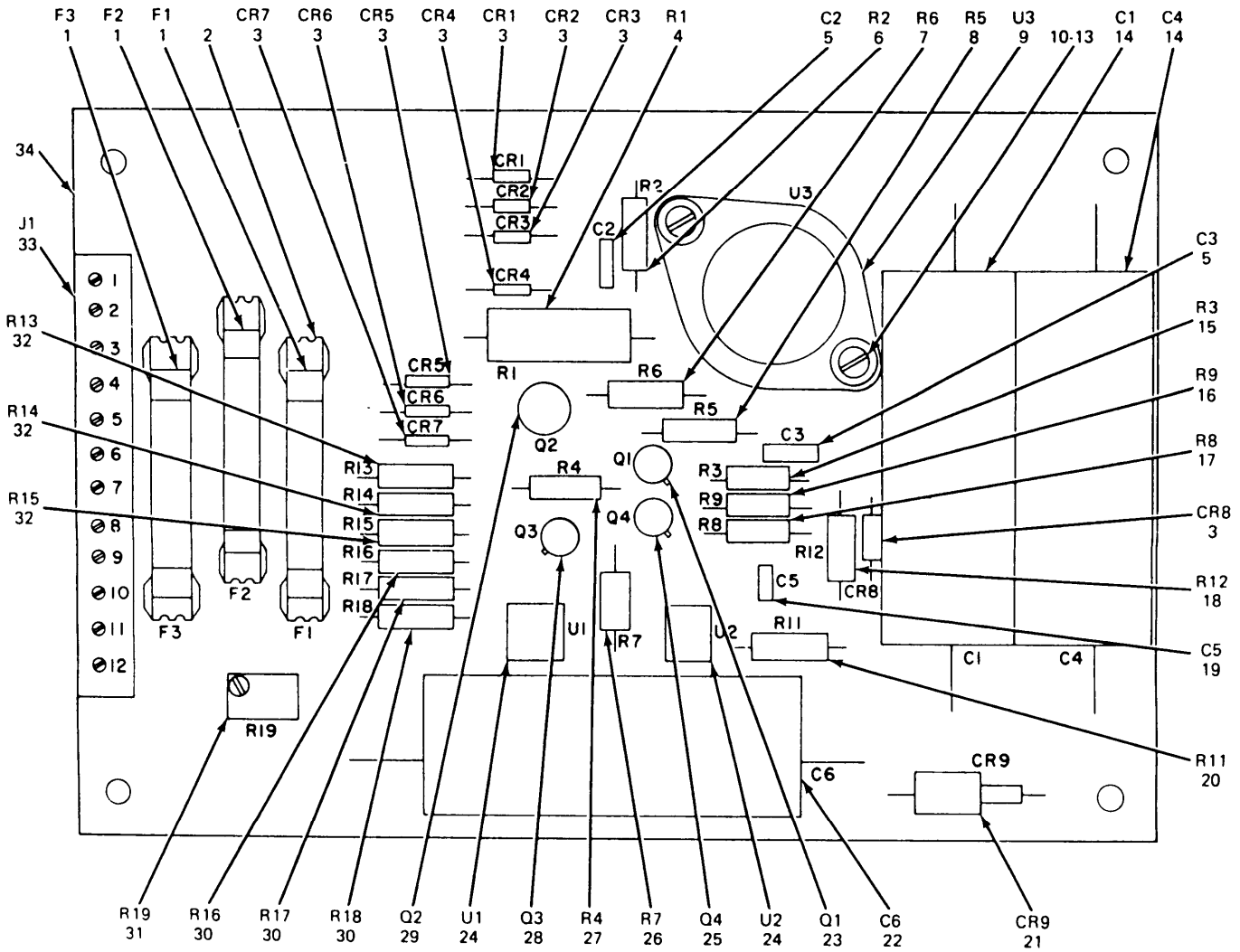


Figure 3. Front Panel Assembly

(1) ITEM NO	(2) SMR CODE	(3) FSCM	(4) PART NUMBER	(5) DESCRIPTION AND USABLE ON CODE (UOC)	(6) QTY
GROUP 0101 FRONT PANEL ASSEMBLY					
FIG 3					
1	PAFZZ	59108	VSMT350-300	AMMETER	1
2	PAFZZ	10389	327T1-3/4	LAMP, INCANDESCENT	1
3	PAFZZ	10389	5139-038	LAMP, HOLDER ASSEMBL	1
4	PAFZZ	10389	LC35GT2	LENS	1
5	PAFZZ	10389	LH89/1	LAMPHOLDER	1
6	PAHZZ	55364	200906	CIRCUIT CARD ASSEMB	1
7	PAFZZ	96906	MS51957-26	SCREW, MACHINE	2
8	PAFZZ	96906	MS35338-136	WASHER, LOCK	4
9	PAFZZ	80063	SM-B-416109-1	WASHER, FLAT	18
10	XBFZZ	59108	VSMT350-40	VOLTMETER	1
11	PAFZZ	81349	RV4LAYS252A	RESISTOR, VARIABLE, N	1
12	PAFZZ	07858	8684U	SWITCH, TOGGLE	1
13	PAFZZ	74193	CD3Z316-1	CIRCUIT BREAKER	1
14	PAFZZ	96906	MS51957-28	SCREW, MACHINE	2
15	PAFZZ	55364	50010	KNOB	1
16	PAFZZ	55364	500111	SCREW MACHINE	1
17	PAFZZ	10983	B17A373-600E	SWITCH, ROTARY	1
18	PAFZZ	96906	MS24693C28	SCREW, MACHINE	4
19	PAFZZ	96906	MS15795-807	WASHER, FLAT	4
20	PAFZZ	96906	MS35338-137	WASHER, LOCK	4
21	PAFZZ	96906	MS35649-284	NUT, PLAIN, HEXAGON	4
22	PAFZZ	96906	MS24523-30	SWITCH, TOGGLE	1
23	XBFZZ	46384	AW3-1/2T13	STUD, WING	1
24	XBFZZ	46384	GH3-1/2	RETAINER, STUD	1
25	PAFZZ	96906	MS20426	RIVET	2
26	XBFZZ	46384	R3-1/2	RECEPTACLE, POS	1
27	XBFZZ	46384	BSOS632-12	NUT, PLAIN, CLINCH	4

END OF FIGURE



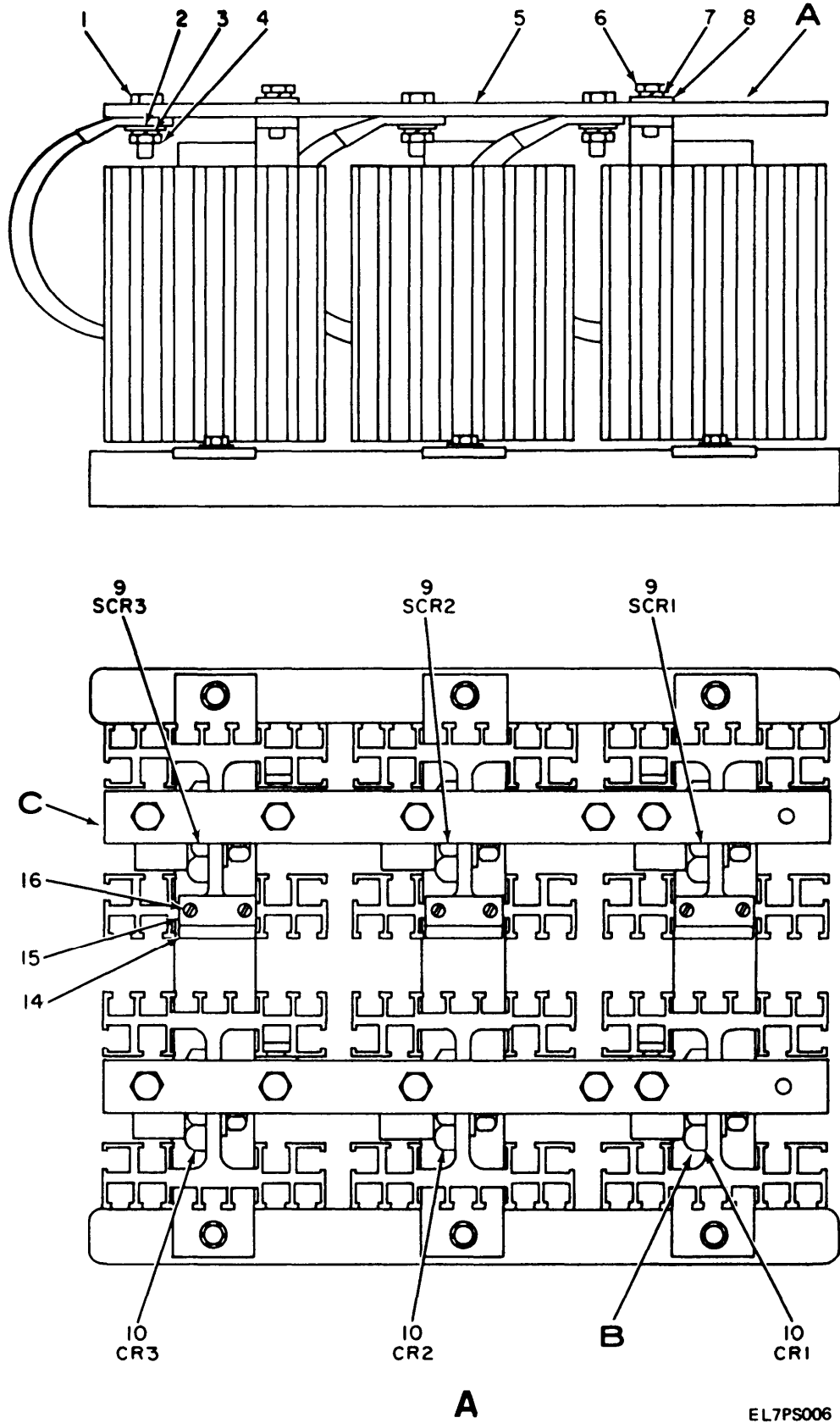
PREFIX REFERENCE DESIGNATIONS WITH A1

EL7PS005

Figure 4. Circuit Board Assembly

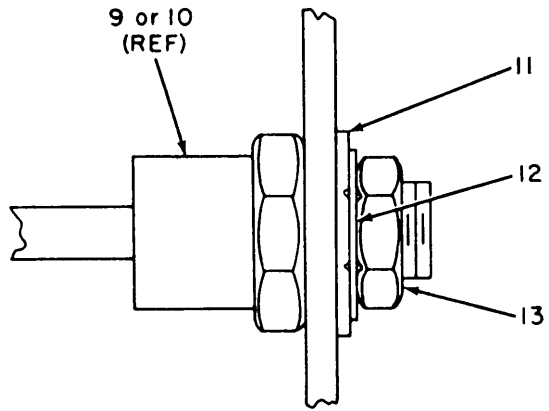
(1) ITEM NO	(2) SMR CODE	(3) FSCM	(4) PART NUMBER	(5) DESCRIPTION AND USABLE ON CODE (UOC)	(6) QTY
GROUP 010101 CIRCUIT CARD ASSEMBLY					
FIG 4					
1	PAHZZ	71400	312-500	FUSE, CARTRIDGE	3
2	PAHZZ	71400	122087	RETAINER, FUSE	2
3	PAHZZ	81349	1N4007	SEMICONDUCTOR DEVIC	8
4	PAHZZ	81349	RC42GF390J	RESISTOR, FIXED, COMP	1
5	PAHZZ	81349	CK06BX224K	CAPACITOR, FIXED, CER	2
6	PAHZZ	81349	RCR20G222JS	RESISTOR, FIXED, COMP	1
7	PAHZZ	81349	RCR20G151JS	RESISTOR, FIXED, COMP	1
8	PAHZZ	81349	RC20GF103J	RESISTOR, FIXED, COMP	1
9	PAHZZ	04713	MC7812CK	REGULATOR, VOLTAGE	1
10	PAHZZ	96906	MS51957-5	SCREW, MACHINE	2
11	PAHZZ	96906	MS35338-136	WASHER, LOCK	2
12	PAHZZ	80063	SM-B-416109-1	WASHER, FLAT	4
13	PAHZZ	96906	MS35649-264	NUT, PLAIN, HEXAGON	2
14	PAHZZ	81349	CK06B144K	CAPACITOR	2
15	PAHZZ	81349	RCR20G681JS	RESISTOR, FIXED, COMP	1
16	PAHZZ	81349	RC20GF474J	RESISTOR, FIXED, COMP	1
17	PAHZZ	81349	RC20GF201J	RESISTOR, FIXED, COMP	1
18	PAHZZ	81349	RC20GF331J	RESISTOR, FIXED, COMP	1
19	PAHZZ	81349	CK06BX471K	CAPACITOR	2
20	PAHZZ	81349	RC20GF332J	RESISTOR, FIXED, COMP	1
21	PAHZZ	81349	1N3022	DIODE, ZENER	1
22	PAHZZ	81349	CK06BXR47K	CAPACITOR	1
23	PAHZZ	81349	2N2222	TRANSISTOR	1
24	PAHZZ	09214	H11F3	INTERGRATED CIRCUIT	2
25	PAHZZ	81349	2N2907A	TRANSISTOR	1
26	PAHZZ	81349	RCR20G221JS	RESISTOR, FIXED, COMP	1
27	PAHZZ	81349	RCR20G102JS	RESISTOR, FIXED, COMP	1
28	PAHZZ	81349	2N2646	TRANSISTOR	1
29	PAHZZ	81349	2N2905A	TRANSISTOR	1
30	PAHZZ	81349	RCR20G101JS	RESSITOR, FIXED, COMP	3
31	PAHZZ	80294	3299W1-502	RESISTOR, VARIABLE, N	1
32	PAHZZ	81349	RCR20G470JS	RESISTOR, FIXED, COMP	3
33	PAHZZ	83079	55B412	CON, REC, ELEC	1
34	PAHZZ	55364	200907	PC WIRING BOARD	1

END OF FIGURE

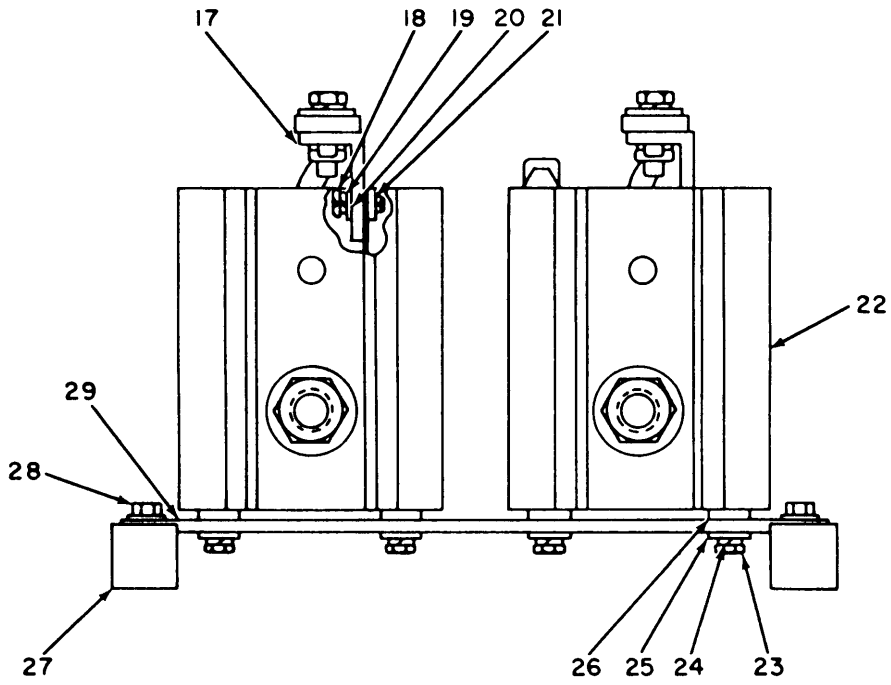


EL7PS006

Figure 5. SCR Power Module Assembly (Sheet 1 of 2)



B



C

EL7PS007

Figure 5. SCR Power Module Assembly (Sheet 2 of 2)

(1) ITEM NO	(2) SMR CODE	(3) FSCM	(4) PART NUMBER	(5) DESCRIPTION AND USABLE ON CODE (UOC)	(6) QTY
GROUP 0102 RECTIFIER ASSEMBLY					
FIG 5					
1	PAHZZ	96906	MS35308-334	SCREW,CAP,HEX	1
2	PAHZZ	96906	MS15795-812	WASHER,FLAT	1
3	PAHZZ	96906	MS35338-140	WASHER,LOCK	1
4	PAHZZ	96906	MS35640-3314	NUT,PLAIN,HEXAGON	1
5	PAHZZ	55364	201422	BAR,BUS	1
6	PAFZZ	96906	MS35308-307	SCREW,CAP,HEXAGON H	4
7	PAHZZ	96906	MS35338-139	WASHER,LOCK	1
8	PAFZZ	96906	MS15795-810	WASHER,FLAT	2
9	PAHZZ	55364	500121	RECTIFIER,SIL CTRL	
10	PAHZZ	55364	500122	SEMINCONDUCTOR DEV	1
11	PAHZZ	96906	MS15795-810	WASHER,FLAT	1
12	PAHZZ	96906	MS35338-137	WASHER,LOCK	1
13	PAHZZ	96906	MS535308-075	NUT,PLAIN,HEX	1
14	PAHZZ	97013	MS599-2	STRIP MARKER	1
15	PAHZZ	97103	599-2	TERMINAL BLOCK	1
16	PAHZZ	96906	MS51957-30	SCREW, MACHINE	1
17	PAHZZ	55364	201425	BRACKET, ANGLE	1
18	PAHZZ	96906	MS35308-307	SCREW,CAP,HEX	1
19	PAHZZ	96906	MS35338-137	WASHER,LOCK	1
20	PAHZZ	96906	MS15795-810	WASHER,FLAT	1
21	PAHZZ	55364	201640	NUT,SQUARE	1
22	PAHZZ	55364	201421	HEAT SINK	1
23	PAHZZ	96906	MS35308-307	SCREW,CAP,HEX	1
24	PAFZZ	96906	MS35338-137	WASHER,LOCK	1
25	PAHZZ	96906	MS15795-810	WASHER,FLAT	1
26	PAHZZ	06540	9253A1/4-28-17	SPACER	1
27	PAHZZ	55364	201424	BASE V	1
28	PAHZZ	96906	MS35308-305	SCREW,CAP,HEX	1
29	PAHZZ	55364	201423	RAIL,SUPPORT	1

END OF FIGURE

NATIONAL STOCK NUMBER AND PART NUMBER INDEX

STOCK NUMBER	NATIONAL STOCK NUMBER INDEX		STOCK NUMBER	FIG. ITEM	
	FIG.	ITEM		FIG.	ITEM
5306-00-021-3912	5	1	5310-00-929-6395	3	8
5305-00-054-5639	4	10		4	11
5305-00-054-6650	3	7	5310-00-933-8120	2	36
5305-00-054-6652	2	22	5310-00-933-8121	2	4
	3	14		5	7
5305-00-054-6654	5	16	5310-00-933-8778	2	52
5305-00-054-6672	2	19	5310-00-934-9759	2	12
5305-00-054-6674	2	55		3	21
5305-00-066-7327	3	18	5310-00-934-9761	4	13
5307-00-075-2730	2	41	5310-00-934-9765	2	35
5905-00-104-8350	4	26	5961-00-949-1440	4	29
5905-00-106-9344	4	30	5310-00-973-8660	2	24
5905-00-108-6922	4	7		3	9
5905-00-110-0196	4	27		4	12
5905-00-111-4734	4	32	5310-00-974-6623	5	3
5905-00-111-8357	4	15	6110-01-027-8993	4	9
5905-00-141-1168	4	6	5915-01-082-7209	2	34
5940-00-143-4794	2	47	5999-01-158-3004	1	3
5905-00-185-8510	4	8		3	6
5910-00-220-3407	4	5			
5905-00-279-2674	4	17			
5905-00-279-3418	4	4			
5905-00-279-3506	4	20			
5905-00-348-3527	4	31			
5310-00-400-5503	2	17			
5307-00-435-2094	2	42			
5310-00-488-9327	2	53			
5905-00-539-2567	3	11			
5310-00-582-5677	2	5			
	5	8			
	5	11			
	5	20			
	5	25			
5310-00-584-7799	2	61			
5310-00-625-5756	5	2			
5930-00-683-1626	3	22			
5305-00-685-3511	2	16			
5305-00-685-8105	2	58			
5305-00-688-2018	5	6			
	5	18			
	5	23			
5305-00-688-2020	2	14			
	5	28			
5305-00-702-4524	2	50			
5310-00-767-9425	2	51			
5305-00-844-5960	2	3			
5310-00-880-5978	2	10			
	3	19			
5961-00-925-3777	4	25			
5310-00-929-6395	2	23			

SECTION IV

NATIONAL STOCK NUMBER AND PART NUMBER INDEX

PART NUMBER INDEX				
FSCM	PART NUMBER	STOCK NUMBER	FIG.	ITEM
46384	AW3-1/2T13		3	23
46384	BSOS632-12		3	27
10983	B17A373-600E		3	17
74193	CD3Z316-1		3	13
81349	CK06BXR47K		4	22
81349	CK06BX224K	5910-00-220-3407	4	5
81349	CK06BX471K		4	19
81349	CK06B144K		4	14
46384	CL50428-1		2	29
			2	62
46384	FHS032-12	5307-00-435-2094	2	42
46384	GH3-1/2		3	24
56699	GN144U050KMA1		2	54
09214	H11F3		4	24
10389	LC35GT2		3	4
10389	LH89/1		3	5
04713	MC7812CK	6110-01-027-8993	4	9
96906	MS15795-807	5310-00-880-5978	2	10
			3	19
96906	MS15795-808		2	37
96906	MS15795-810	5310-00-582-5677	2	5
			5	8
			5	11
			5	20
			5	25
96906	MS15795-812	5310-00-625-5756	5	2
96906	MS15795-818	5310-00-767-9425	2	51
96906	MS15795-822	5310-00-584-7799	2	61
96906	MS20426		3	25
96906	MS24523-30	5930-00-683-1626	3	22
96906	MS24693C28	5305-00-066-7327	3	18
96906	MS25036-112	5940-00-143-4794	2	47
96906	MS25488-26		2	44
96906	MS35308-302	5305-00-844-5960	2	3
96906	MS35308-305	5305-00-688-2020	2	14
			5	28
96906	MS35308-306	5305-00-685-3511	2	16
96906	MS35308-307	5305-00-688-2018	5	6
			5	18
			5	23
96906	MS35308-312		2	26
96906	MS35308-313	5305-00-685-8105	2	58
96906	MS35308-334	5306-00-021-3912	5	1
96906	MS35308-413	5305-00-702-4524	2	50
96906	MS35338-136	5310-00-929-6395	2	23
			3	8
			4	11
96906	MS35338-137		2	11
			3	20
			5	12
			5	19

SECTION IV

NATIONAL STOCK NUMBER AND PART NUMBER INDEX

PART NUMBER INDEX				
FSCM	PART NUMBER	STOCK NUMBER	FIG.	ITEM
96906	MS35338-137		5	24
96906	MS35338-138	5310-00-933-8120	5	36
96906	MS35338-139	5310-00-933-8121	2	4
			5	7
96906	MS35338-140	5310-00-974-6623	5	3
96906	MS35338-143	5310-00-933-8778	2	52
96906	MS35640-3314		5	4
96906	MS35649-264	5310-00-934-9761	4	13
96906	MS35649-284	5310-00-934-9759	2	12
			3	21
96906	MS35650-304	5310-00-934-9765	2	35
96906	MS35650-3254	5310-00-400-5503	2	17
96906	MS35650-3394	5310-00-488-9327	2	53
96906	MS51957-26	5305-00-054-6650	3	7
96906	MS51957-28	5305-00-054-6652	2	22
			3	14
96906	MS51957-30	5305-00-054-6654	5	16
96906	MS51957-46		2	9
96906	MS51957-47	5305-00-054-6672	2	19
96906	MS51957-49	5305-00-054-6674	2	55
96906	MS51957-5	5305-00-054-5639	4	10
96906	MS535308-075		5	13
97013	MS599-2		5	14
81349	NAS561		2	60
81349	NAS671C10		2	39
81349	RCR20G101JS	5905-00-106-9344	4	30
81349	RCR20G102JS	5905-00-110-0196	4	27
81349	RCR20G151JS	5905-00-108-6922	4	7
81349	RCR20G221JS	5905-00-104-8350	4	26
81349	RCR20G222JS	5905-00-141-1168	4	6
81349	RCR20G470JS	5905-00-111-4734	4	32
81349	RCR20G681JS	5905-00-111-8357	4	15
81349	RC20GF103J	5905-00-185-8510	4	8
81349	RC20GF201J	5905-00-279-2674	4	17
81349	RC20GF331J		4	18
81349	RC20GF332J	5905-00-279-3506	4	20
81349	RC20GF474J		4	16
81349	RC42GF390J	5905-00-279-3418	4	4
59730	RK717		2	45
81349	RV4LAYS252A	5905-00-539-2567	3	11
46384	R3-1/2		3	26
80063	SM-B-416109-1	5310-00-973-8660	2	24
			3	9
			4	12
59108	VSMT350-300		3	1
59108	VSMT350-40		3	10
59108	0-50MV300A		2	38
81992	003-22-003		2	33
81774	01763		2	46
81349	1N3022		4	21
81349	1N4007		4	3

SECTION IV

NATIONAL STOCK NUMBER AND PART NUMBER INDEX

PART NUMBER INDEX				
FSCM	PART NUMBER	STOCK NUMBER	FIG.	ITEM
71400	122087		4	2
81349	2N2222		4	23
81349	2N2646		4	28
81349	2N2905A	5961-00-949-1440	4	29
81349	2N2907A	5961-00-925-3777	4	25
55364	200402	5915-01-082-7209	2	34
55364	200692		2	49
55364	200713		1	4
			2	57
55364	200845		2	63
55364	200846		1	2
			2	13
			2	28
55364	200848		2	2
35364	200849		2	25
55364	200853		1	1
55364	200906	5999-01-158-3004	1	3
			3	6
55364	200907		4	34
55364	200908		2	1
55364	200942		2	43
55364	200943		2	40
55364	200944		2	27
55364	200945		2	31
55364	200946		2	30
55364	200947		2	32
55364	201040		2	7
08779	201100		2	15
55364	201329		2	21
55364	201421		5	22
55364	201422		5	5
55364	201423		5	29
55364	201424		5	27
55364	201425		5	17
55364	201640		5	21
44655	2516		2	20
71400	312-500		4	1
10389	327T1-3/4		3	2
80294	3299W1-502	5905-00-348-3527	4	31
86489	3834008162UV		2	59
55364	50010		3	15
55364	500111		3	16
55364	500121		5	9
55364	500122		5	10
10389	5139-038		3	3
12436	540459-10-32-128	5307-00-075-2730	2	41
83079	55B412		4	33
97103	599-2		5	15
81774	85014-85		2	48
07858	8684U		3	12
06540	8751SS2528-7		2	6

SECTION IV

NATIONAL STOCK NUMBER AND PART NUMBER INDEX

PART NUMBER INDEX				
FSCM	PART NUMBER	STOCK NUMBER	FIG.	ITEM
83330	8948		2	8
83330	8952		2	18
06540	9253A1/4-28-17		5	26
56699	942A734AAP013		2	56

By Order of the Secretary of the Army:

JOHN A. WICKHAM JR.
General, United States Army
Chief of Staff

Official:

DONALD J. DELANDRO
Brigadier General, United States Army
The Adjutant General

D I S T R I B U T I O N:

To be distributed in accordance with DA Form 12-36 literature requirements for PP-4606(*).

RECOMMENDED CHANGES TO EQUIPMENT TECHNICAL PUBLICATIONS

SOMETHING WRONG WITH THIS PUBLICATION?



THEN... JOT DOWN THE DOPE ABOUT IT ON THIS FORM, CAREFULLY TEAR IT OUT, FOLD IT AND DROP IT IN THE MAIL!

FROM: (PRINT YOUR UNIT'S COMPLETE ADDRESS)
 Commander
 Stateside Army Depot
 ATTN: AMSTA-US
 Stateside, N.J. 07703-5007

DATE SENT
 10 July 1975

PUBLICATION NUMBER TM 11-5840-340-20P	PUBLICATION DATE 23 Jan 78	PUBLICATION TITLE Radar Set AN/PRC-76
--	-------------------------------	--

BE EXACT... PIN-POINT WHERE IT IS				IN THIS SPACE TELL WHAT IS WRONG AND WHAT SHOULD BE DONE ABOUT IT:
PAGE NO	PARA-GRAPH	FIGURE NO	TABLE NO	
33				For item 2, change the NSN to read: 5835-00-134-9186. Reason: Accuracy.
44		19		Identify the cover on the junction box (item no. 5). Reason: It is a separate item and is not called out on figure 19.
45				Add the cover of the junction box as an item in the listing for figure 19. Reason: Same as above

S A M P L E

PRINTED NAME, GRADE OR TITLE, AND TELEPHONE NUMBER
 SSG I. M. DeSpirit of 999-1776

SIGN HERE

TEAR ALONG PERFORATED LINE

RECOMMENDED CHANGES TO EQUIPMENT TECHNICAL PUBLICATIONS



THEN...JOT DOWN THE DOPE ABOUT IT ON THIS FORM. CAREFULLY TEAR IT OUT, FOLD IT AND DROP IT IN THE MAIL.

SOMETHING WRONG WITH THIS PUBLICATION?

FROM: (PRINT YOUR UNIT'S COMPLETE ADDRESS)

DATE SENT

PUBLICATION NUMBER

TM 11-6130-243-24P-4

PUBLICATION DATE

20 May 1985

PUBLICATION TITLE

Rectifier Power Supply
PP-4606D/G

BE EXACT PIN-POINT WHERE IT IS

PAGE NO.

PARA-GRAPH

FIGURE NO.

TABLE NO.

IN THIS SPACE TELL WHAT IS WRONG AND WHAT SHOULD BE DONE ABOUT IT:

TEAR ALONG PERFORATED LINE

PRINTED NAME GRADE OR TITLE AND TELEPHONE NUMBER

SIGN HERE

DA FORM 2028-2
1 JUL 79

PREVIOUS EDITIONS ARE OBSOLETE

P.S.--IF YOUR OUTFIT WANTS TO KNOW ABOUT YOUR RECOMMENDATION MAKE A CARBON COPE OF THIS AND GIVE IT TO YOUR HEADQUARTERS.

FILL IN YOUR
UNIT'S ADDRESS

FOLD BACK

DEPARTMENT OF THE ARMY

OFFICIAL BUSINESS

Commander
US Army Communications-Electronics Command
and Fort Monmouth
ATTN: AMSEL-ME-MP
Fort Monmouth, New Jersey 07703-5007

TEAR ALONG PERFORATED LINE

THE METRIC SYSTEM AND EQUIVALENTS

WEIGHT MEASURE

1 Centimeter = 10 Millimeters = 0.01 Meters = 0.3937 Inches
 1 Meter = 100 Centimeters = 1000 Millimeters = 39.37 Inches
 1 Kilometer = 1000 Meters = 0.621 Miles

WEIGHTS

1 Gram = 0.001 Kilograms = 1000 Milligrams = 0.035 Ounces
 1 Kilogram = 1000 Grams = 2.2 lb.
 1 Metric Ton = 1000 Kilograms = 1 Megagram = 1.1 Short Tons

LIQUID MEASURE

1 Milliliter = 0.001 Liters = 0.0338 Fluid Ounces
 1 Liter = 1000 Milliliters = 33.82 Fluid Ounces

SQUARE MEASURE

1 Sq. Centimeter = 100 Sq. Millimeters = 0.155 Sq. Inches
 1 Sq. Meter = 10,000 Sq. Centimeters = 10.76 Sq. Feet
 1 Sq. Kilometer = 1,000,000 Sq. Meters = 0.386 Sq. Miles

CUBIC MEASURE

1 Cu. Centimeter = 1000 Cu. Millimeters = 0.06 Cu. Inches
 1 Cu. Meter = 1,000,000 Cu. Centimeters = 35.31 Cu. Feet

TEMPERATURE

$5/9(^{\circ}\text{F} - 32) = ^{\circ}\text{C}$
 212° Fahrenheit is equivalent to 100° Celsius
 90° Fahrenheit is equivalent to 32.2° Celsius
 32° Fahrenheit is equivalent to 0° Celsius
 $9/5^{\circ}\text{C} + 32 = ^{\circ}\text{F}$

APPROXIMATE CONVERSION FACTORS

TO CHANGE	TO	MULTIPLY BY
Inches	Centimeters	2.540
Feet	Meters	0.305
Yards	Meters	0.914
Miles	Kilometers	1.609
Square Inches	Square Centimeters	6.451
Square Feet	Square Meters	0.093
Square Yards	Square Meters	0.836
Square Miles	Square Kilometers	2.590
Acres	Square Hectometers	0.405
Cubic Feet	Cubic Meters	0.028
Cubic Yards	Cubic Meters	0.765
Fluid Ounces	Milliliters	29.573
its	Liters	0.473
arts	Liters	0.946
allons	Liters	3.785
Ounces	Grams	28.349
Pounds	Kilograms	0.454
Short Tons	Metric Tons	0.907
Pound-Feet	Newton-Meters	1.356
Pounds per Square Inch	Kilopascals	6.895
Miles per Gallon	Kilometers per Liter	0.425
Miles per Hour	Kilometers per Hour	1.609

TO CHANGE	TO	MULTIPLY BY
Centimeters	Inches	0.394
Meters	Feet	3.280
Meters	Yards	1.094
Kilometers	Miles	0.621
Square Centimeters	Square Inches	0.155
Square Meters	Square Feet	10.764
Square Meters	Square Yards	1.196
Square Kilometers	Square Miles	0.386
Square Hectometers	Acres	2.471
Cubic Meters	Cubic Feet	35.315
Cubic Meters	Cubic Yards	1.308
Milliliters	Fluid Ounces	0.034
Liters	Pints	2.113
Liters	Quarts	1.057
ers	Gallons	0.264
ms	Ounces	0.035
ograms	Pounds	2.205
Metric Tons	Short Tons	1.102
Newton-Meters	Pounds-Feet	0.738
Kilopascals	Pounds per Square Inch	0.145
ometers per Liter	Miles per Gallon	2.354
ometers per Hour	Miles per Hour	0.621



PIN: 057873-000